



4 kW Inverger™ (Inverter-Charger)

OPERATIONAL SPECIFICATIONS

AC Input Voltage Range	85 to 264 Volts rms
AC Input Current Maximum	18 Amps rms
AC Line Frequency Range	45 to 66 Hz
Maximum Battery Charge Power	4000 Watts
Maximum Discharge	
AC Power Out	4000 Watts
Battery Input Voltage Range	280 to 390 Volts DC
Maximum Discharge AC Current	27 Amps rms
Maximum Charge DC Current	27 Amps DC
Liquid Coolant Temperature Range	-40 to +65°C (derated below 0°C)
Coolant Flow Rate	1.5 gal/min
Efficiency	> 90%
Power Factor	> 0.95 (at nominal max power)

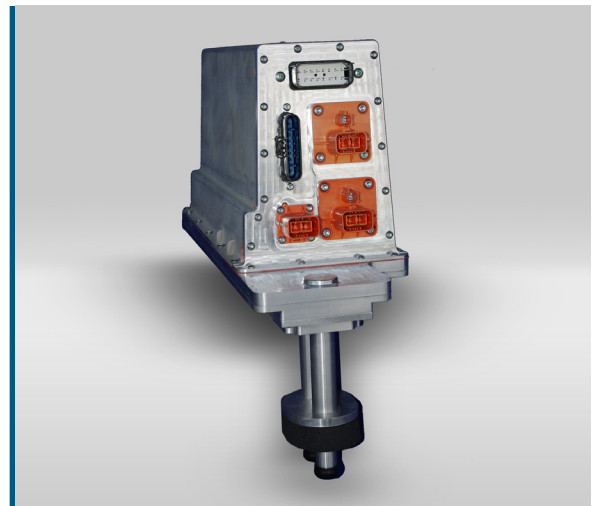
PRELIMINARY MECHANICAL

Package size	430 x 230 x 170 mm
Weight	16 kg
Rating	IP67

CAN CONTROLLED

COMPLIANCE

UL 2202, UL 840, SAE J1772, IEEE 1547



The Eetrex 4kW Inverger™ (Grid Tie Inverter and Battery Charger) can either charge a battery from the power grid or discharge a battery into the power grid. The 4kW can also supply emergency AC power to a house or for remote power generation up to 2400 Watts at 120 Vac input or 4000 Watts at 240 Vac input. The 4 kW Inverger™ is galvanically isolated and meets applicable IEEE and UL requirements for grid tie operation. AC or DC power delivery is controllable from CAN bus interface from 0 to 4000 Watts.

Eetrex

Energy Efficient Transportation Technologies

Eetrex Incorporated • 3245 Prairie Ave. • Boulder, CO 80301
303.444.0569 • talk@eetrex.com

 METHODE ELECTRONICS, INC.

Phone: (877) 885-6006
Email: info@methode.com

www.methode.com